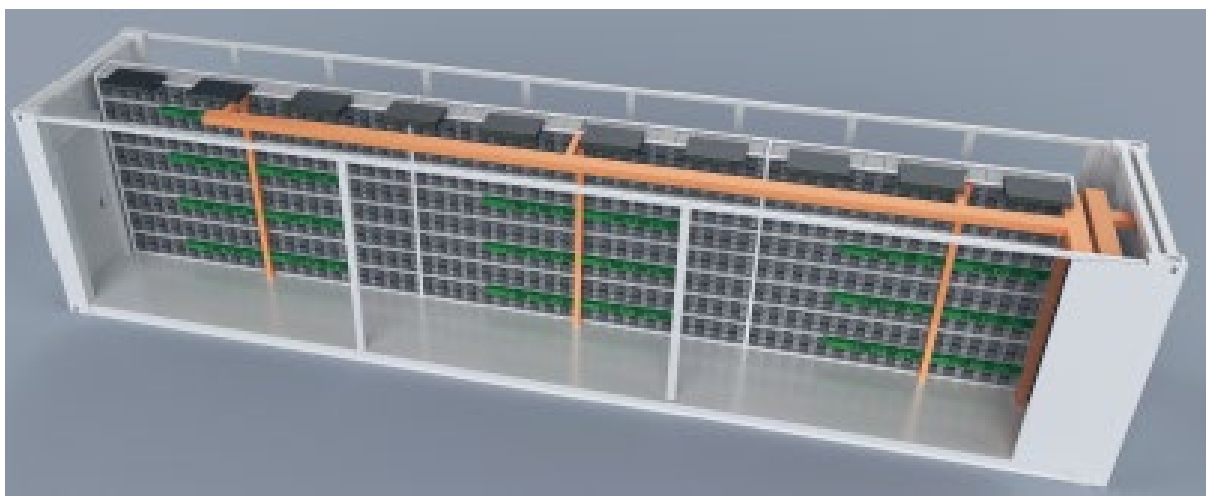




PDM OreBox-1200 (Gen4)
40 Foot High-Cube Mobile Data Center
1.2MW, up to 336 ASIC Miners



CONFIDENTIAL AND PROPRIETARY

© 2022. May not be copied, reproduced or distributed without the express written permission of Power and Data Management LLC
1-678-995-4346 | www.pdmlc.net

Technical specifications: PDM OreBox-1200

Dimensions	Specification
Enclosure Length x Width x Height	12192mmx 2438mm x 2896mm
Number of installed mining rigs	Up to 336 units with 3up to 4.0 kW power consumption per rig
Enclosure rating	NEMA 3 / IP54
Power	
Power Input kW	Upper Limit: 1,200 kW
Input Voltage	415VAC 3ph
Inside Access	3 phase power connection to inside access 4 Main Breakers
Connection type:	3 Hot wires, 1 Neutral, 1 Ground, each phase Volts: AC 240V
Distribution Panel and Breakers	Electric cabinet on the side of each mine box: 4 x 600A Molded Case Main Breakers (Noark, ABB or similar), 8 x 400A Molded Case Breakers (Noark, ABB or similar), 22 x 20 ports PDUs. (UL Rated)
Power Distribution & Cabling	All wiring, equipment racks; Power Distribution Units; Cables (Miner cables AWG 12), Distribution Breakers (Noark, ABB or similar), Main Panel Breakers (Noark, ABB or similar), lights, electrical outlets. C19 power cord from PDU to miner required, Y-pigtail can be separately ordered for connecting twin mining rig plug inputs to PDU
Cooling	
Cooling technology	Air Economizer with Evaporative cooling, 3 Panels per Container
Industrial grade Exhaust Fans (550W per fan)	18 Fans with automated louvers
Airflow (Cubic-Feet-per-Minute)	353,147 CFM (600,000 Cubic Meter/Hour)
Air filtering system, Air flow sensor, Temperature sensor	Included
Additional technical details	
Facilities management and monitoring system	Included - Controller based with MODBUS, TCP-IP
Security	Key locks standard to dual entry/egress security doors
Regulatory compliance	UL 489, Compliant to IEC 60950 and international wiring regulations
External Environmental Operation limits	
Operating temperatures	0°F to 40°F, higher for low humidity environments
Operating humidity range	0 to 90% RH (below Condensation point)
Operating altitude	0 to 5,000 ft

CONFIDENTIAL AND PROPRIETARY

© 2022. May not be copied, reproduced or distributed without the express written permission of Power and Data Management LLC
1-678-995-4346 | www.pdmlc.net



Water Panel Side



Fans Side



Mesh Air Filter Side



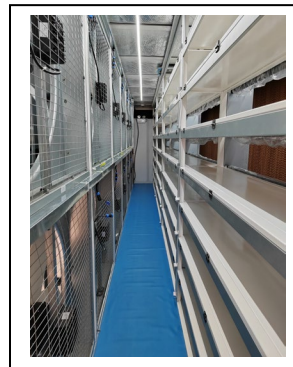
Cold Aisle and Hot Aisle



PDU on the Racks



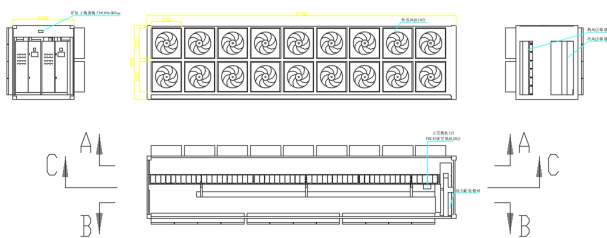
Air Filters Installation



Container Inside View



Power Cabinet Box



Layout of Inside



Inside View